



**Vreugdenhil**  
Bulbs & Plants



# African Breeze

PLANTS WITH AFRICAN ROOTS



# CONTENT

6 Ornithogalum Dubium

10 Ornithogalum Thyrsoides

14 Scilla Peruviana

16 Ensete Maurelli

18 Albuca Spiralis

20 Lachenalia

22 Pennisetum

24 Eucomis

26 Decorum

# ZAMBIAN CARNIVORE PROGRAMME

BY SUPPORTING AFRICAN  
BREEZE YOU ALSO  
SUPPORT THE ZAMBIAN  
CARNIVORE PROGRAMME

Large carnivore species across Africa have become increasingly vulnerable. With growing human populations, the space and resources these notoriously wide-ranging animals need are depleted, often to the point where carnivores can no longer persist. In Zambia, a country that houses critical populations of endangered carnivores, the **Zambian Carnivore Programme (ZCP)** researches and mitigates current and prospective threats to all major large carnivore species.

Vreugdenhil Bulbs & Plants gets their products for African Breeze from Africa and therefore wants to give something back to that continent. That's why Vreugdenhil Bulbs & Plants donates to the ZCP, so that the research, education and support of the large carnivore species can be continued.



Last June (2019) we handed over our first donation of € 10.089,03 at the WWF headquarters. We hope to be able to donate such a fantastic amount this season!

[www.zambiacarnivores.org](http://www.zambiacarnivores.org)

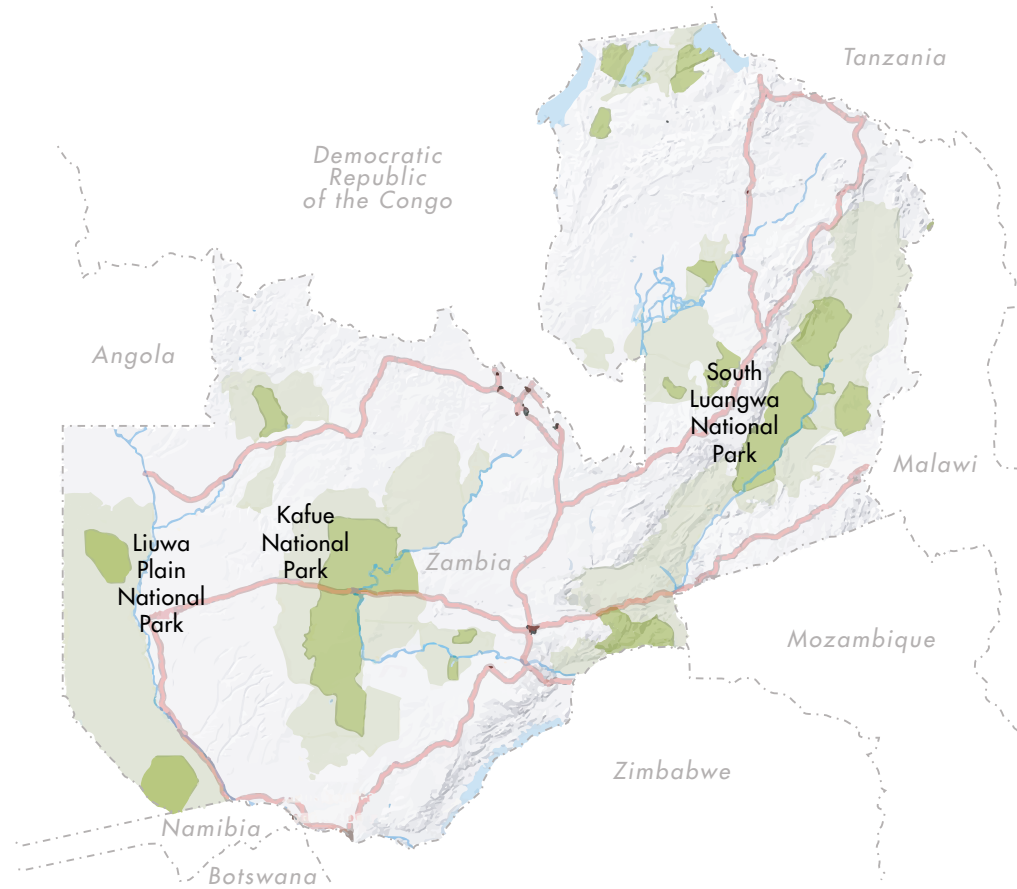
The **Zambian Carnivore Programme** is, amongst others, financially supported and made possible by: WWF and National Geographic.



# WHERE THE ZCP WORKS

The **Zambian Carnivore Programme** works across three distinct ecosystems in Zambia, each encompassing a wide range of biological, environmental and human variation.

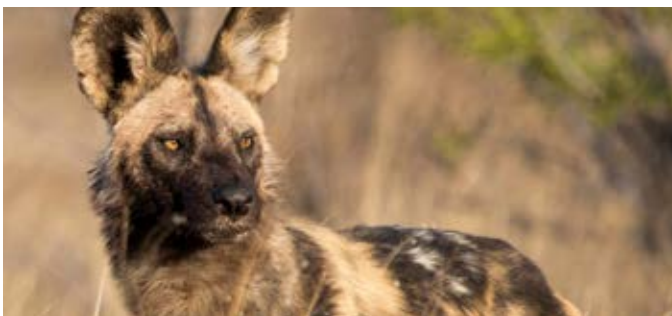
In the absence of fences, the carnivore populations in the South Luangwa, Kafue, and Liuwa Plain National Parks traverse freely between the fully protected parks and the semi-secured, surrounding Game Management Areas (GMAs), which in turn comprise massive protected area complexes of up to 70,000 km<sup>2</sup>. Each study site differs substantially in carnivore and herbivore abundance, diversity, and distribution as well as in ecological uniqueness, climate, and human impacts. In concert this multi-site approach allows us to best obtain the necessary information on Zambia's conservation threats and take steps to address them.



# THE LARGE CARNIVORES

## Lion

Zambia is one of the few remaining countries with large populations of the most social of the big cats. The Luangwa valley houses one of Africa's last 10 lion strongholds with the large expanse of Greater Kafue housing the country's second largest population, and Liuwa Plain holding a small and recovering one, led by Lady Liuwa.



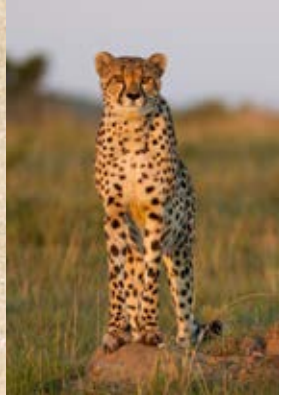
## African Wild Dogs

One of Africa's most endangered carnivores the wild dog has been eliminated from most countries it once occurred in and Zambia is one of six countries with viable populations of this species, with the largest populations centered

in the Greater Kafue and Luangwa valley ecosystems. The most social of the dog family, wild dogs are a unique genus and live in tightly knit social groups as packs, communally rearing their young and defending territories.

## Cheetah

Another threatened species, the world's fastest land mammal resides in the Greater Kafue and Liuwa Plain study areas, though once was also found in the Luangwa and could eventually be returned. Cheetah can range over thousands of kilometers in Zambia, making them and wild dogs the largest ranging species.



## Spotted Hyena

As Africa's most widespread, successful and socially complex large carnivore hyena are of key importance and found in every ecosystem we work in. Maligned as a dirty scavenger, hyena are actually prolific hunters and wonderful mothers, living in a clan system where rank and maternity rule.

## Leopard

The most solitary of the big cats, leopard are found throughout Zambia, with the Luangwa valley being the reknown 'Valley of the Leopard.' Seldom seen in most ecosystems throughout the continent, leopards are regularly observed in the Greater Kafue and Luangwa.





# ORNITHOGALUM DUBIUM

Available: week 03-23

The Dubium only grows in nature in the Cape Province in South Africa (Table Mountain on the South Cape).

The bulbous plant Ornithogalum Dubium is also called star of Bethlehem.



TL612100

12



TL612015

12



TL612016

12



612044

12



612989

12



# ORNITHOGALUM DUBIUM

Available: week 03-23



651006

15



TL612101

12



TL613720

13



TL614748

14



TL615747

15

TL615748

15





# ORNITHOGALUM THYRSOIDES

Available: week 15-25

The Latin  
dubium means  
"unlike others of  
the genus"



TL613725

13



612459

12



TL614746

14



TL615749

15



# ORNITHOGALUM THYRSOIDES

Available: week 15-25



651026 / 612050

10,5

12



623099

23



TL614116

14



TL614117

14



614798

14

The South  
African  
Ornithogalum  
Thyrsoides is also called  
chinkerinchee or  
wonder-flower.





SCILLA  
PERUVIANA

Available: week 09-12

The name  
Peruviana (= from  
Peru) is the result of a  
misunderstanding by Varl  
Linnaeus. He received a  
copy from Spain with a  
ship called "Peru".



712040

12



TA715724

14



TA714134

15



TL714200

14



TN713100

13



TL714201

14



# ENSETÉ MAURELLI

Available: week 14-22

The Ensete  
Maurelli is  
family of the banana  
plant with particularly  
beautiful colored and  
very large leaves.



514001

14



The Ensete  
Maurelli can grow  
up to 4 meters high  
and after 5 years it  
will give some small  
bananas.

This plant,  
originating from  
East Africa (Ethiopia),  
is a herbaceous plant  
that is also used as  
food in Africa.



# ALBUCA SPIRALIS

## FRIZZLE SIZZLE

Available: week 18-34



Albuca Spiralis is a bulbous plant and finds its roots in the desert in the northwest of South Africa, from the South African Karoo and the desert of Namibia.



TN613100

13



612111

12



TN612113

12



TL614119

14



TN614115

14



TL614120

14





# LACHENALIA

Available: week 22-28



912500

12

Lachenalia,  
a genus of bulbs,  
and family of the lily,  
comes from the Cape  
Province and from  
Namaqualand in  
South Africa.



By breeding  
and crossing its  
wild ancestors, this  
exotic species has been  
made suitable as a  
houseplant.



# PENNISETUM

Available: week 14-28

Pennisetum originates from (sub) tropical regions, mainly concentrated around the Niger river basin in Africa, but from there the sex spread through Asia all the way to Australia.



Pennisetum are known commonly as fountain grasses.



917173

17



930827

30



# EUCOMIS

Available: week 24-36

The Eucomis is a genus from the asparagus family and comes from the wet parts of the mountains in southern Africa.



517006

17



A certain tribe of Bantu people called Xhosa used the bulbs as a remedy for rheumatism.





ALL OUR ITEMS ARE ALSO AVAILABLE  
IN HEAVY DECORUM QUALITY!



Ornithogalum Dubium



Ornithogalum Thyrsoides



Scilla Peruviana



Ensete Maurelli



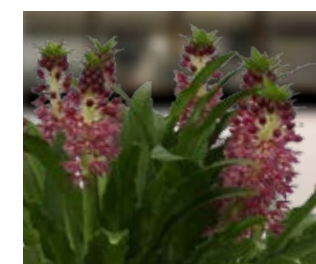
Albuca Spiralis



Lachenalia



Pennisetum



Eucomis

WHEN BUYING AFRICAN BREEZE PLANTS WITH THE  
DECORUM LABEL, THIS ALSO CONTRIBUTES TO  
OUR DONATION TO THE ZCP!





**Vreugdenhil**  
Bulbs & Plants



#### WEBSITE

- [www.vreugdenhillbp.com](http://www.vreugdenhillbp.com)
- [www.africanbreeze.nl](http://www.africanbreeze.nl)
- [webshop.decorumplants.com](http://webshop.decorumplants.com)



#### SHOWROOM

Monsterseweg 60a  
2691 JJ 's-Gravenzande  
The Netherlands

---

T +31(0)174 - 413 811 • [sales@vreugdenhillbp.com](mailto:sales@vreugdenhillbp.com)



AfricanBreezePlants